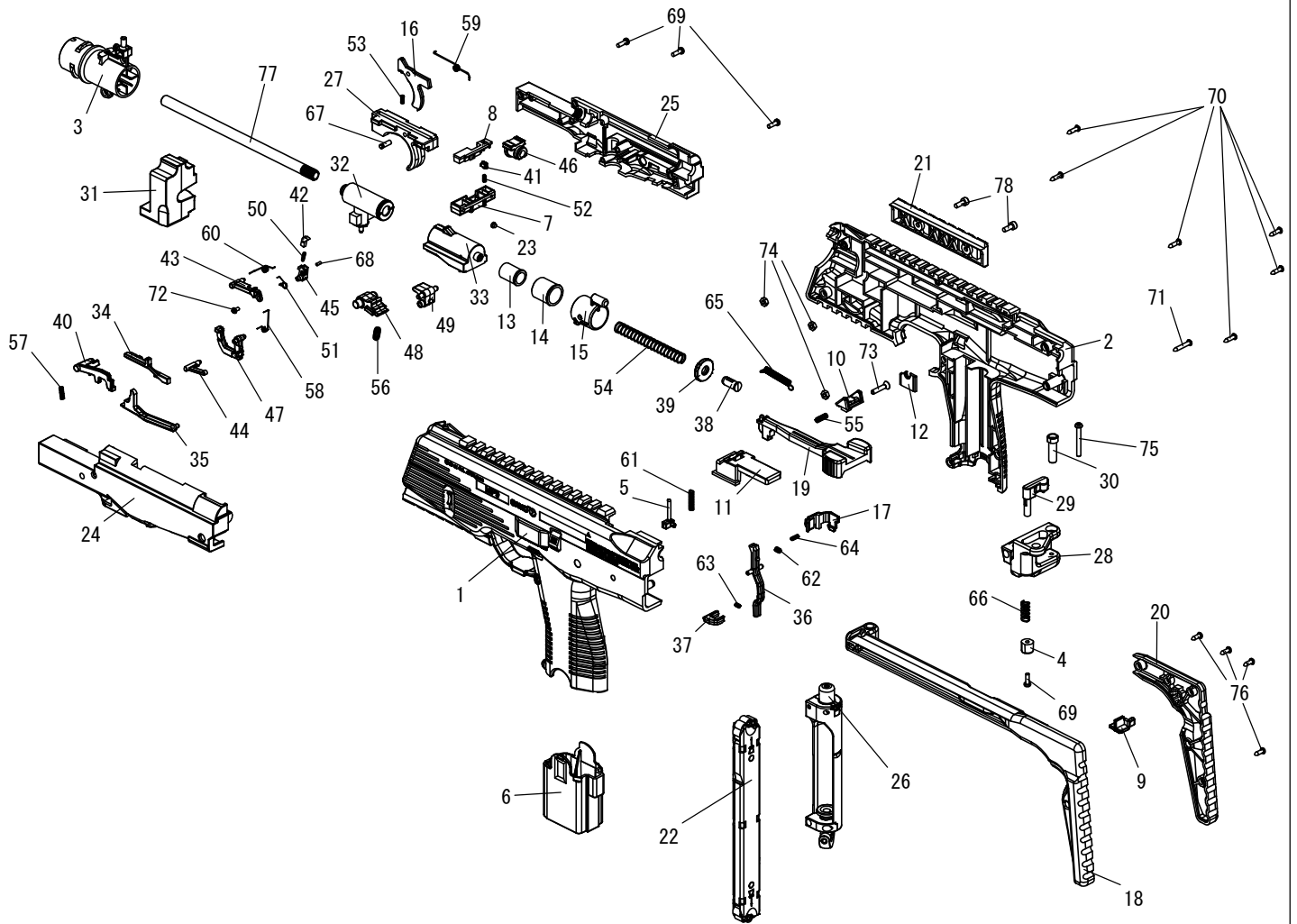


MP 9



No.	Name of Parts
1	Frame Left
2	Frame Right
3	Muzzle
4	Stock Release Button
5	Clip Box Ejector
6	Puncture Cover
7	Manual Safety
8	Manual Safety Cover
9	Stock Hook
10	Rear Sight
11	Rear Sight Base
12	Rear Sight Stopper
13	Spring Housing A
14	Spring Housing B
15	Spring Housing C
16	Trigger Safety
17	Clip Catch
18	Stock
19	Cocking Handle
20	Stock Right
21	Side Rail
22	Clip Box
23	Red Dot
24	Mechanism Box Left
25	Mechanism Box Right
26	Puncture Unit

No.	Name of Parts
27	Trigger
28	Stock Base
29	Stock Lock
30	Stock Shaft
31	Weight
32	Valve Assembly
33	Cylinder Block
34	Trigger Bar
35	Sear Bar
36	Puncture Catch
37	2nd Puncture Catch
38	Spring Guide
39	Spring Guide Base
40	Inner Safety
41	Safety Plunger
42	Nail
43	Nail Arm
44	Sear Bar Buffer
45	Nail Base
46	Chamber Sleeve
47	Inner Safety Puller
48	Sear A
49	Sear B
50	Nail Spring
51	Nail Base Spring
52	Safety Plunger Spring

No.	Name of Parts
53	Trigger Safety Spring
54	Bolt Spring
55	Rear Sight Spring
56	Bolt Sear Spring
57	Inner Safety Spring
58	Sear Bar Buffer Spring
59	Trigger Spring
60	Nail Arm Spring
61	Clip Box Ejector Spring
62	Puncture Catch Spring
63	2nd Puncture Catch Spring
64	Clip Box Catch Spring
65	Cocking Handle Return Spring
66	Stock Lock Spring
67	Pin 3x9.5
68	Spring Pin 1.5x4
69	Pan Head Tap Tight Screw S-Type 2.6x8
70	Pan Head Tapping Screw A-type 2.6x10
71	Pan Head Tapping Screw A-type 2.6x16
72	Washer Head Tap Tight Screw S-type 2x4
73	Flat Head Screw 3x15
74	Nut M3
75	Pan Head Tap Tight Screw S-Type 3x25
76	Pan Head Tapping Screw A-type 2.6x8
77	Inner Barrel
78	Cap Screw M3x8